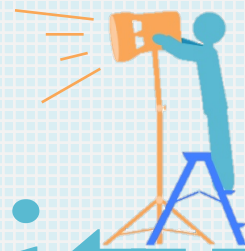
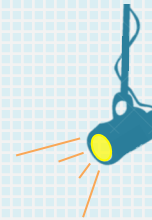


# Latino Community Stage



Workshop  
Summary



# How Learning Works

Workshop Description	<p>Most classrooms must focus on 'what' to learn. The curriculum set forth is important to develop a knowledge base that is needed as a standard and to advance to the next grade level. However, 'how' students learn may not be at the forefront of such content. Restrictions with time, available resources, and diversity may create difficulties for such undertakings. This insightful workshop focuses on 'how' learning and memory work, and specific techniques that will help better understand how to approach the most challenging subjects and concepts. The goal is to increase interest enhancement, reflective thought and higher-level reasoning, which are important to academic performance. By the end of this interactive workshop participants will have learned specific and practical study strategies that will help them become purposeful learners.</p>
Target Audience	<ul style="list-style-type: none"><li>• Middle school, high school, and university students (all majors welcome)</li><li>• Ideal for student led clubs/orgs, nonprofits, symposiums, &amp; conferences</li></ul>
Primary Objective	<p>Understand how effective learning works to improve academic performance</p>
Our Goals	<ul style="list-style-type: none"><li>• Identify how the learning process works</li><li>• Redefine and introduce new ideologies of intelligence</li><li>• Understand methods of studying challenging concepts and subjects</li><li>• Understand how our environment affects learning</li><li>• Present practical approaches designed for the unmotivated learner</li><li>• Learning how and when to pay attention</li></ul>
Desired Outcomes	<ul style="list-style-type: none"><li>• Become a curious and purposeful learner</li><li>• Gain new study strategies that improve academic performance</li><li>• The ability to become a self-regulated learner</li></ul>
Topics Covered	<ul style="list-style-type: none"><li>• Research Based Learning Principles</li><li>• Interest Enhancement</li><li>• Learning Collectively</li><li>• Self-regulation</li><li>• Environmental Structuring</li><li>• Learning Strategies</li><li>• Help Seeking Behaviors</li><li>• Intelligence Revised</li></ul>



# How Learning Works

---

**Length of Workshop:** Workshop can be adapted to meet the needs of the group or event. However, length of workshop may affect timeframe to build toolbox (see below).

**Where?** We come to your school, university or event. Our workshop coordinator will ensure that all the details specific to your group or event are addressed.

**Workshop Fee:** Workshop fee will depend on number of participants and length of workshop. Partial or full waivers for fee will be considered on an as-needed basis.

**Book a Workshop** Contact our Event Coordinator at <https://www.latinocommunitystage.org/contact> if you have any further questions or to book a workshop.

- Do workshop participants have to be Latino/a? Nope! Although the Latino/a population is our primary demographic, everyone is welcome to take part and contribute in workshops and all other LCS events.
- We welcome participants with disabilities. Please let us know if any reasonable accommodations need to be made. In addition, ensuring that the workshop venue and space is accessible to all registered individuals will also be important.

- Important Notes:**
- Food is not included, however, we encourage hosts to provide a light meal or refreshments.
  - All majors are encouraged to take part in this workshop.
  - What's the process like? Workshops are fun and interactive! However, our primarily goal is for participants to walk away with practical ways to improve academic performance. Our event coordinator will answer any additional questions and send a simple checklist that will help organize your event.
  - Is there acting or theater involved? Why Latino Community Stage? Ah no, not at all. Much of what we do is about putting the best and brightest Latino/as on a global stage to celebrate their accomplishments.